

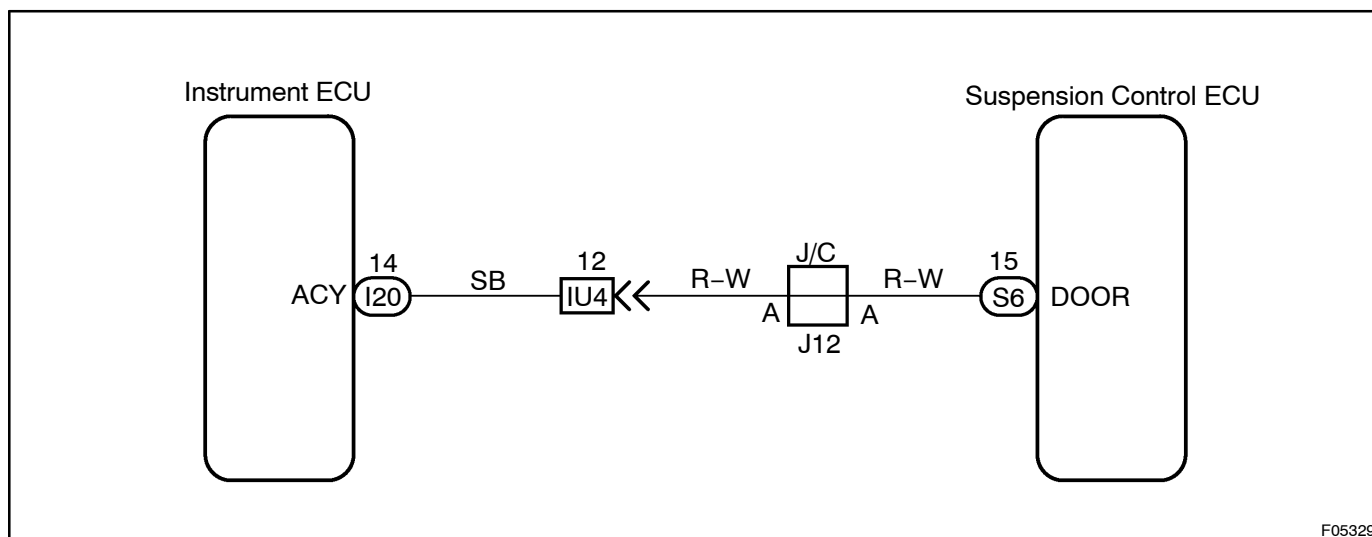
<b>DTC</b>	<b>C1783 / 83</b>	<b>Door Courtesy Switch Circuit</b>
------------	-------------------	-------------------------------------

## CIRCUIT DESCRIPTION

The door courtesy switch comes on when the door is opened and goes off when the door is closed. Therefore, battery positive voltage is applied to the terminal DOOR of the ECU when all the doors are closed and 0 V is applied when even one door is opened.

DTC No.	DTC Detecting Condition	Trouble Area
C1783 / 83	Door courtesy switch signal does not change	<ul style="list-style-type: none"> <li>• Door courtesy switch</li> <li>• Door courtesy switch circuit</li> <li>• Instrument ECU</li> <li>• ECU</li> </ul>

## WIRING DIAGRAM



F05329

## INSPECTION PROCEDURE

<b>1</b>	<b>Check operation of open door warning light.</b>
----------	--

### CHECK:

Check that open door warning light comes on when each door is opened and goes off when all doors are closed.

NG

Check open door warning light circuit (See page [BE-79](#)).

OK

## 2 Check output signal of door courtesy switch.

### IN CASE OF USING LEXUS HAND-HELD TESTER:

#### PREPARATION:

- Connect the LEXUS hand-held tester to the DLC3.
- Turn the ignition switch ON and push the LEXUS hand-held tester main switch ON.
- Select the DATALIST mode on the LEXUS hand-held tester.

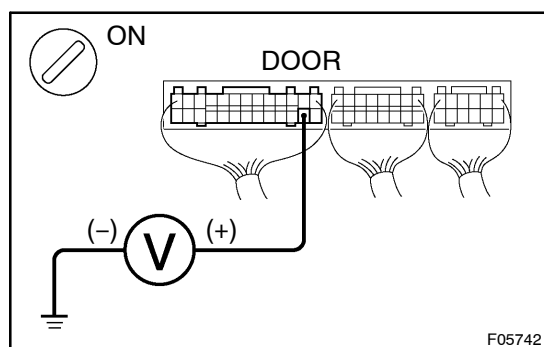
#### CHECK:

Check the door courtesy switch condition displayed on the LEXUS hand-held tester when all doors are closed and each door is opened.

#### OK:

When each door is opened: "ON" is displayed for door courtesy switch condition.

When all doors are closed: "OFF" is displayed for door courtesy switch condition.



### IN CASE OF NOT USING LEXUS HAND-HELD TESTER:

#### PREPARATION:

Remove the suspension control ECU with connectors still connected.

#### CHECK:

- Turn the ignition switch ON.
- Measure voltage between terminal DOOR of suspension control ECU connector and body ground when all doors are closed and each door is opened.

#### OK:

Door condition	Voltage
All doors closed	9 – 14 V
Each door opened	Below 1.5 V

OK

No problem.

NG

## 3 Check for open circuit in harness and connector between instrument ECU and suspension control ECU (See page IN-33).

NG

Repair or replace harness or connector.

OK

Check and replace suspension control ECU.